

NOTES:

- 1. HOLE DIMENSIONS PER PAE-40458
- 2. DESIGNED TO BE LASER WELDED TO AN ALUMINUM HOUSING.
- 3. HERMETIC LEAK RATE LESS THAN OR EQUAL TO 1×10^{-9} CC/SEC He AT 1 ATM DIFFERENTIAL PRESSURE.
- 4. DESIGNED TO MATE WITH PAE PART NUMBER 94663.
- 5. ELECTRICAL REQUIREMENTS:

INSULATION RESISTANCE: GREATER THAN 50,000 MEGOHMS AT $500 \pm 10\%$ AT 25°C WHEN TESTED IAW MIL-STD-1344 METHOD 3003.

DIELECTRIC WITHSTANDING VOLTAGE: MUST SHOW NO EVIDENCE OF BREAKDOWN OR FLASHOVER WHEN SUBJECTED TO 600 VAC RMS 60Hz IAW MIL-STD-1344, METHOD 3001. DURATION OF APPLICATION TO BE 1 SEC MIN.

- 6. MATERIAL:
SHELL EXPLOSION BONDED STAINLESS STEEL TO 4XXX-SERIES ALUMINUM.
CONTACTS: BERYLLIUM-COPPER IAW ASTM B196 OR ASTM B197
INSULATORS: KRYOFLEX 313-16 PROPRIETARY POLYCRYSTALLINE CERAMIC
INTERFACIAL SEAL FLOUROSIL CONE RUBBER IAW MIL-R-25988, CLASS I, TYPE II, GRADE 60.

- 7. FINISH:
CONTACTS: ELECTROLYTIC NICKEL PLATE IAW QQ-290 .000100/.000250 THICK
GOLD PLATE IAW ASTM-B488. TYPE I GRADE A, .000125/.000200 THICK.

WELD FLANGE:
CHEMICAL CONVERSION COAT IAW MIL-DTL-5541, CLASS 1A.

- 8. ORDERING INFORMATION:

PLEASE SPECIFY ACCORDING TO THE FOLLOWING:

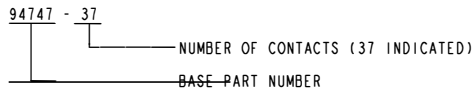
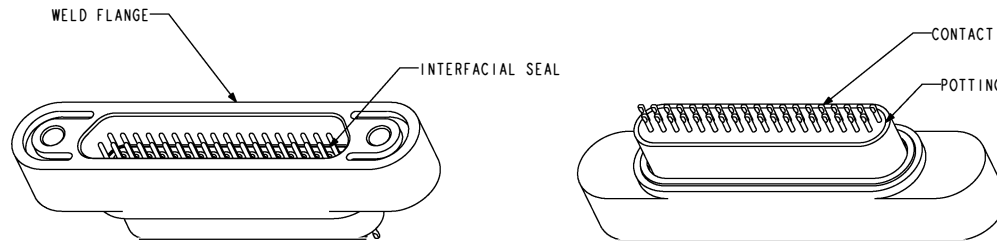
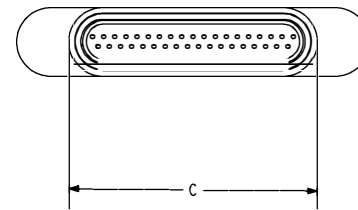
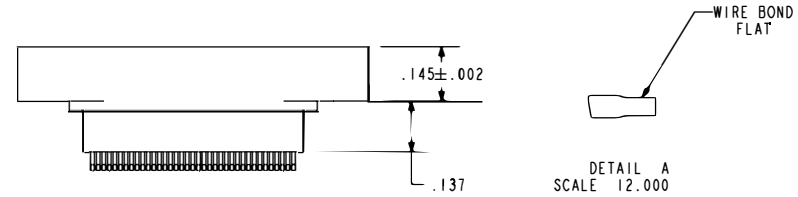
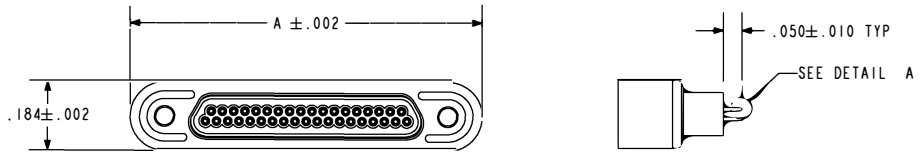
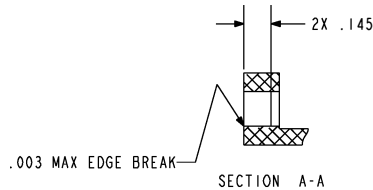
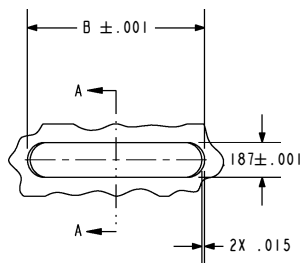


TABLE I			
NUMBER OF CONTACTS	A	B	C
9	.524	.527	.246
15	.614	.617	.336
21	.704	.707	.426
25	.764	.767	.486
31	.854	.857	.576
37	.944	.947	.666
51	1.154	1.157	.876



SCALE 2.500
(94662-37 SHOWN)

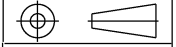


HOLE DETAIL

HERMETIC SOLUTIONS GROUP
Enabling Technology

TITLE: CONNECTOR, JR-D, RG, LP, AC, RECEPTACLE

THIRD ANGLE PROJECTION



CAGE CODE: 64567

VERSION: A. -
 RELEASE DATE: 09-16-11

SALES DRAWING

SHEET: 1 OF 1

DOCUMENT: 0-94747