

NOTES:

- 1. HOLES AND INTERFACE DIMENSIONS PER MIL-DTL-32139/4.
- 2. MATEABLE WITH CONNECTORS MANUFACTURED PER MIL-DTL-32139/3.
- 3. DESIGNED TO BE LASER WELDED TO AN ALUMINUM HOUSING.
- 4. HERMETIC LEAK RATE: LESS THAN OR EQUAL TO 1×10^{-9} CC/SEC He AT 1 ATM DIFFERENTIAL PRESSURE.
- 5. ELECTRICAL REQUIREMENTS:

INSULATION RESISTANCE: GREATER THAN 5,000 MEGOHMS AT $500 \pm 10\%$ VDC AT 25°C WHEN TESTED IAW MIL-STD-1344, METHOD 3003.

DIELECTRIC WITHSTANDING VOLTAGE: MUST SHOW NO EVIDENCE OF BREAKDOWN OR FLASHOVER WHEN SUBJECTED TO 600 VAC RMS 60Hz IAW MIL-STD-1344, METHOD 3001. DURATION OF APPLICATION TO BE 1 SEC MIN.

- 6. MATERIALS:

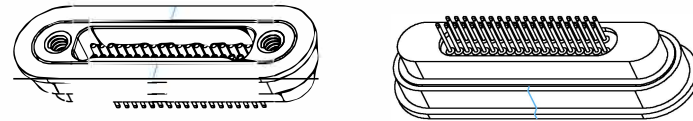
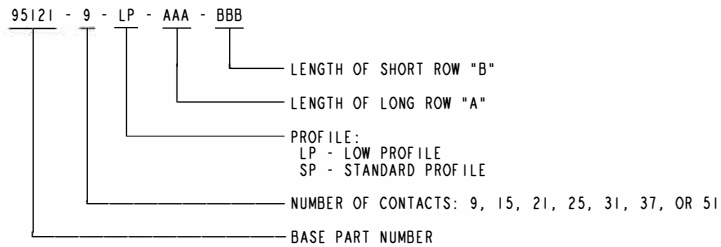
 - WELD FLANGE: 4XXX-SERIES ALUMINUM.
 - CONTACTS: 303 STAINLESS STEEL IAW SAE-AMS 5640R, TYPE I.
 - INSULATORS: KRYOFLEX 313 PROPRIETARY POLYCRYSTALLINE CERAMIC.
 - INSERT: 300-SERIES STAINLESS STEEL.

- 7. FINISH:

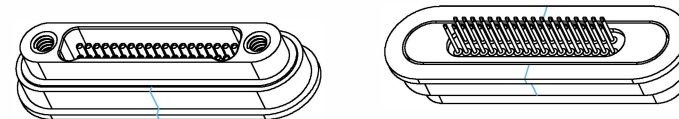
 - ELECTROLYTIC NICKEL PLATE IAW QQ-N-290, .000100/.000250 THICK.
 - GOLD PLATE IAW MIL-G-45204, TYPE III, GRADE A, .000075/.000125 THICK.

8. ORDERING INFORMATION:

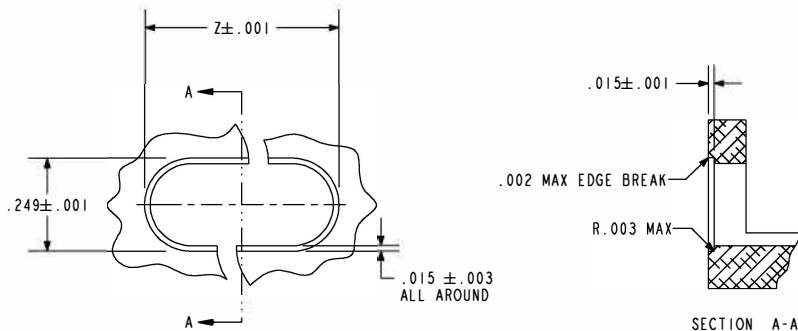
PLEASE SPECIFY ACCORDING TO THE FOLLOWING



LOW PROFILE CONFIGURATION
(95121-37-LP-100-080 SHOWN)



STANDARD PROFILE CONFIGURATION
(95121-37-SP-100-080 SHOWN)



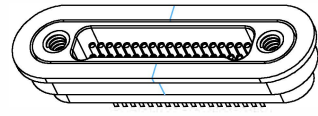
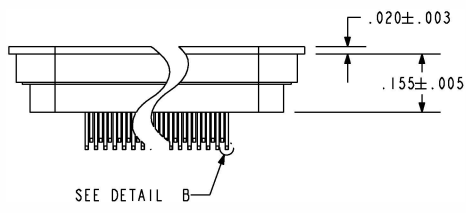
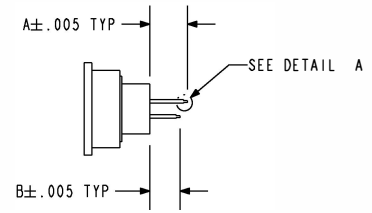
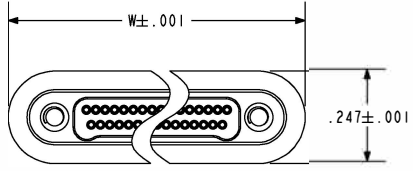
SUGGESTED MOUNTING HOLE

WARNING - THIS DOCUMENT CONTAINS TECHNICAL DATA, EXPORT OF WHICH IS RESTRICTED BY THE EXPORT ADMINISTRATION REGULATIONS (EAR). DISCLOSURE TO FOREIGN PERSONS WITHOUT PRIOR U.S. GOVERNMENT APPROVAL IS PROHIBITED. VIOLATIONS OF THE EXPORT LAWS AND REGULATIONS ARE SUBJECT TO SEVERE CIVIL AND CRIMINAL PENALTIES.

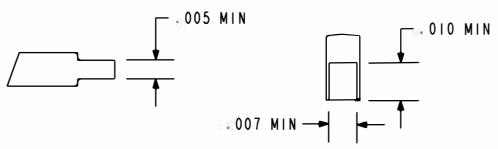


TITLE: CONNECTOR, NANO, DUAL LOBE				THIRD ANGLE PROJECTION 	
VERSION A.0				JJC: EAR	
RELEASE DATE: 05-18-16		SALES DRAWING		DOCUMENT: 0-95121	
CAGE CODE 64567		SCALE: 2.000		SHEET: 1 OF 2	

INFORMATION HEREIN IS SUBJECT TO THE DATA RIGHTS AND EXPORT CONTROL LEGENDS ON SHEET 1.

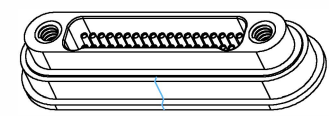
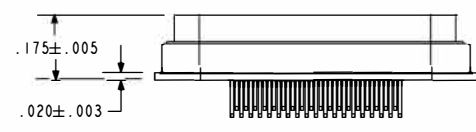
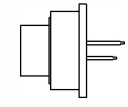
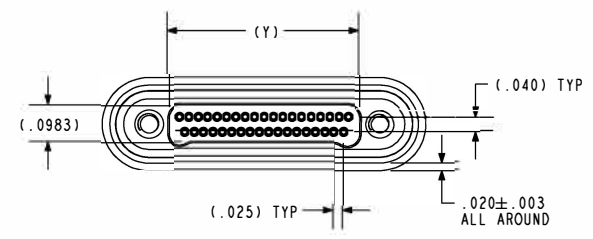


(LOW PROFILE CONFIGURATION)
SCALE 2.000



DETAIL A
SCALE 20.000

DETAIL B
SCALE 20.000

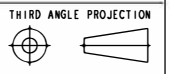


(STANDARD PROFILE CONFIGURATION)
SCALE 2.000

TABLE I			
NUMBER OF CONTACTS	Y	W	Z
9	.1633	.517	.519
15	.2383	.592	.594
21	.3133	.667	.669
25	.3633	.717	.719
31	.4383	.792	.794
37	.5133	.867	.869
51	.6883	1.042	1.044

HERMETIC SOLUTIONS GROUP
Enabling Technology

TITLE: CONNECTOR, NANO, DUAL LOBE



THE INFORMATION HEREIN CONTAINS PROPRIETARY RIGHTS OF PARE AND SHALL NOT BE USED, REPRODUCED, OR DISCLOSED TO THIRD PARTIES FOR ANY PURPOSE EXCEPT AS SPECIFICALLY AUTHORIZED IN WRITING BY PARE

CAGE CODE: 64567

SHEET: 2 OF 2

DOCUMENT: 0-95121