

NOTES:

1. HOLE DIMENSIONS PER PAE-40458
2. DESIGNED TO BE LASER WELDED TO AN ALUMINUM HOUSING.
3. HERMETICITY NOT TESTED.
4. ELECTRICAL REQUIREMENTS:
 - INSULATION RESISTANCE: GREATER THAN 50,000 MEGOHMS AT $500 \pm 10\%$ AT 25°C WHEN TESTED IAW MIL-STD-1344 METHOD 3003.
 - DIELECTRIC WITHSTANDING VOLTAGE: MUST SHOW NO EVIDENCE OF BREAKDOWN OR FLASHOVER WHEN SUBJECTED TO 600 VAC RMS 60Hz IAW MIL-STD-1344, METHOD 3001. DURATION OF APPLICATION TO BE 1 SEC MIN.
5. MATERIAL:
 - SHELL: 4XXXX-SERIES ALUMINUM.
 - CONTACTS: BERYLLIUM-COPPER IAW ASTM B196 OR ASTM B197
 - INSULATORS: KRYOFLEX 313-16 PROPRIETARY POLYCRYSTALLINE CERAMIC
 - INTERFACIAL SEAL FLOUROSIL CONE RUBBER IAW MIL-R-25988, CLASS I, TYPE II, GRADE 60.
6. FINISH:
 - CONTACTS: ELECTROLYTIC NICKEL PLATE IAW QQ-290 .000100/.000250 THICK
 - GOLD PLATE IAW ASTM-B488. TYPE I GRADE A, .000125/.000200 THICK.
 - SHELL: CHEMICAL CONVERSION COAT IAW MIL-DTL-5541, CLASS IA.
7. ORDERING INFORMATION:
 - PLEASE SPECIFY ACCORDING TO THE FOLLOWING:

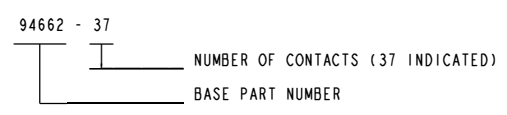
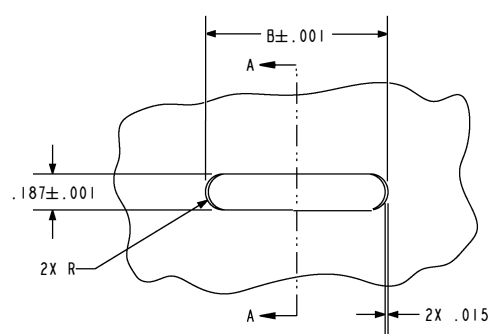
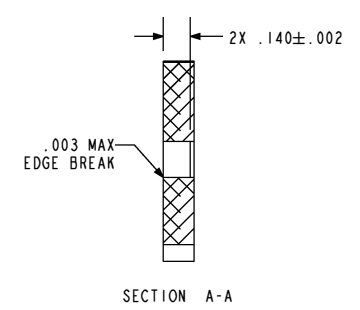


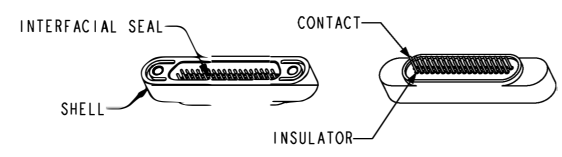
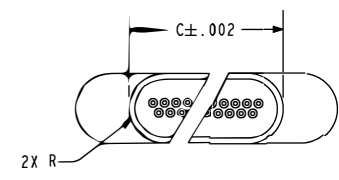
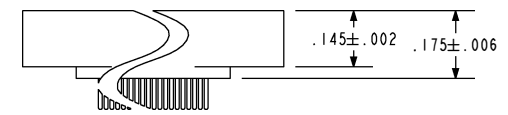
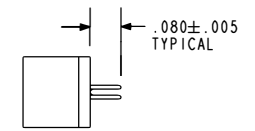
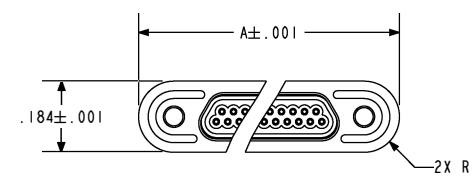
TABLE I			
NUMBER OF CONTACTS	A	B	C
9	.524	.527	.246
15	.614	.617	.336
21	.704	.707	.426
25	.764	.767	.486
31	.854	.857	.576
37	.944	.947	.666
51	1.154	1.157	.876



SUGGESTED HOLE DETAIL



SECTION A-A



SCALE 1.000
94662-37 SHOWN



TITLE: CONNECTOR, JR-D, RG, LP, AC, RECEPTACLE		THIRD ANGLE PROJECTION 	
VERSION C.0		CAGE CODE: 64567	
RELEASE DATE: 12-04-12		DOCUMENT: 0-94662	
SALES DRAWING		SHEET: 1 OF 1	